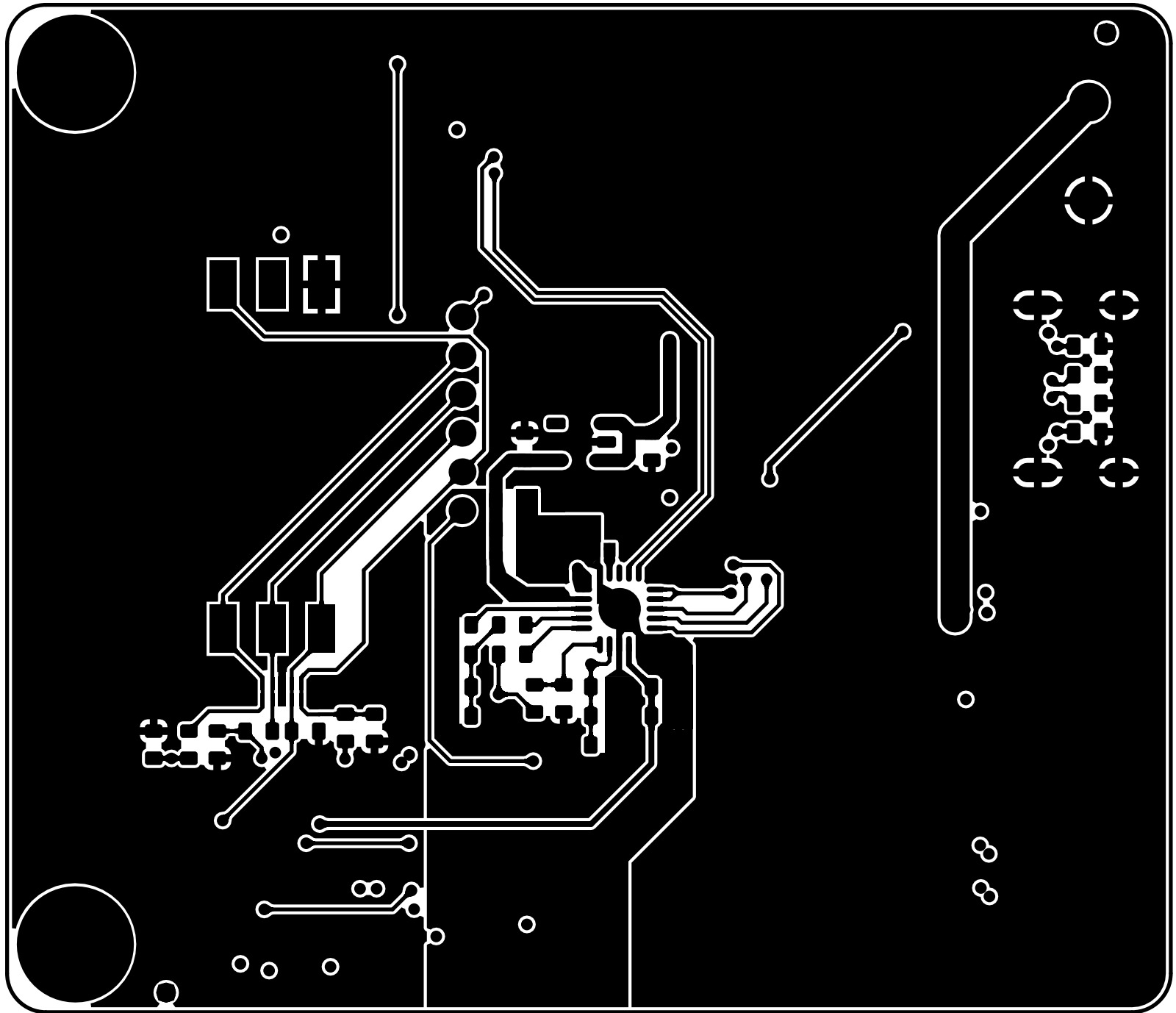
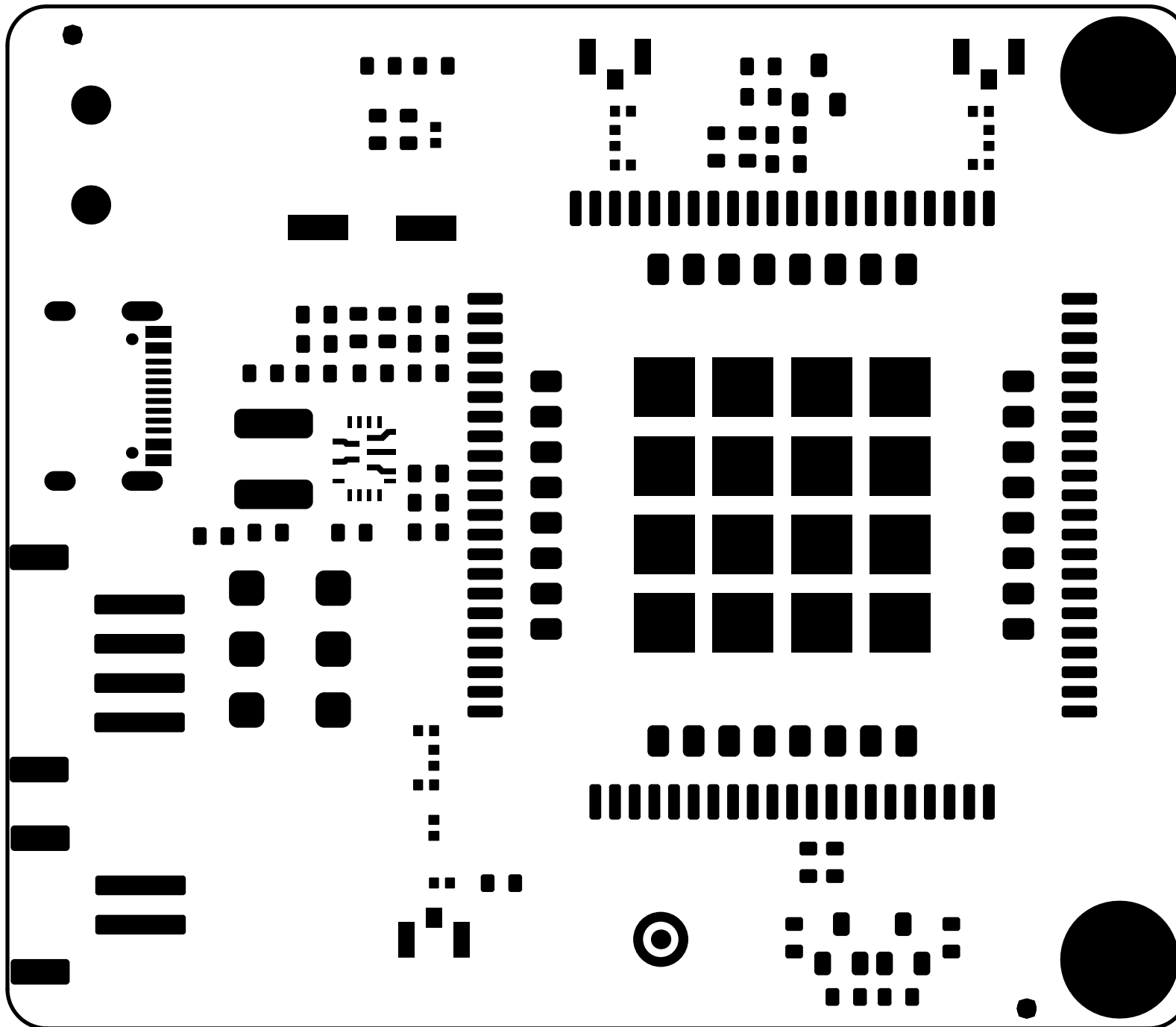


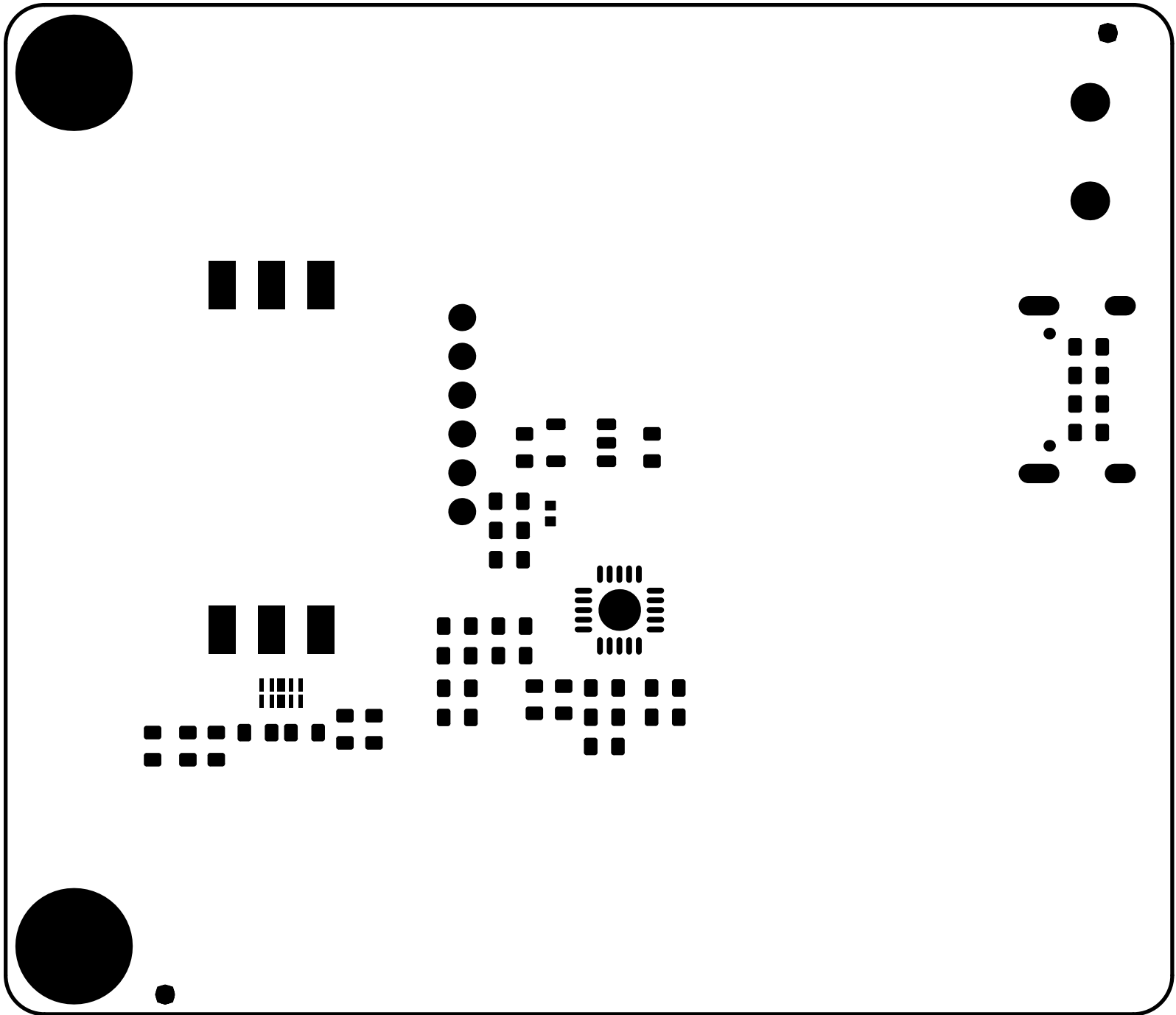
PCB Information	Name:[TEL0161 CAT1][V1.0.0]	Thickness: 1.6mm
Engineer: YXD	Top SolderMask: Black	Bottom SolderMask: Black
Date: 20231031	Top Silkscreen: White	Bottom Silkscreen: White



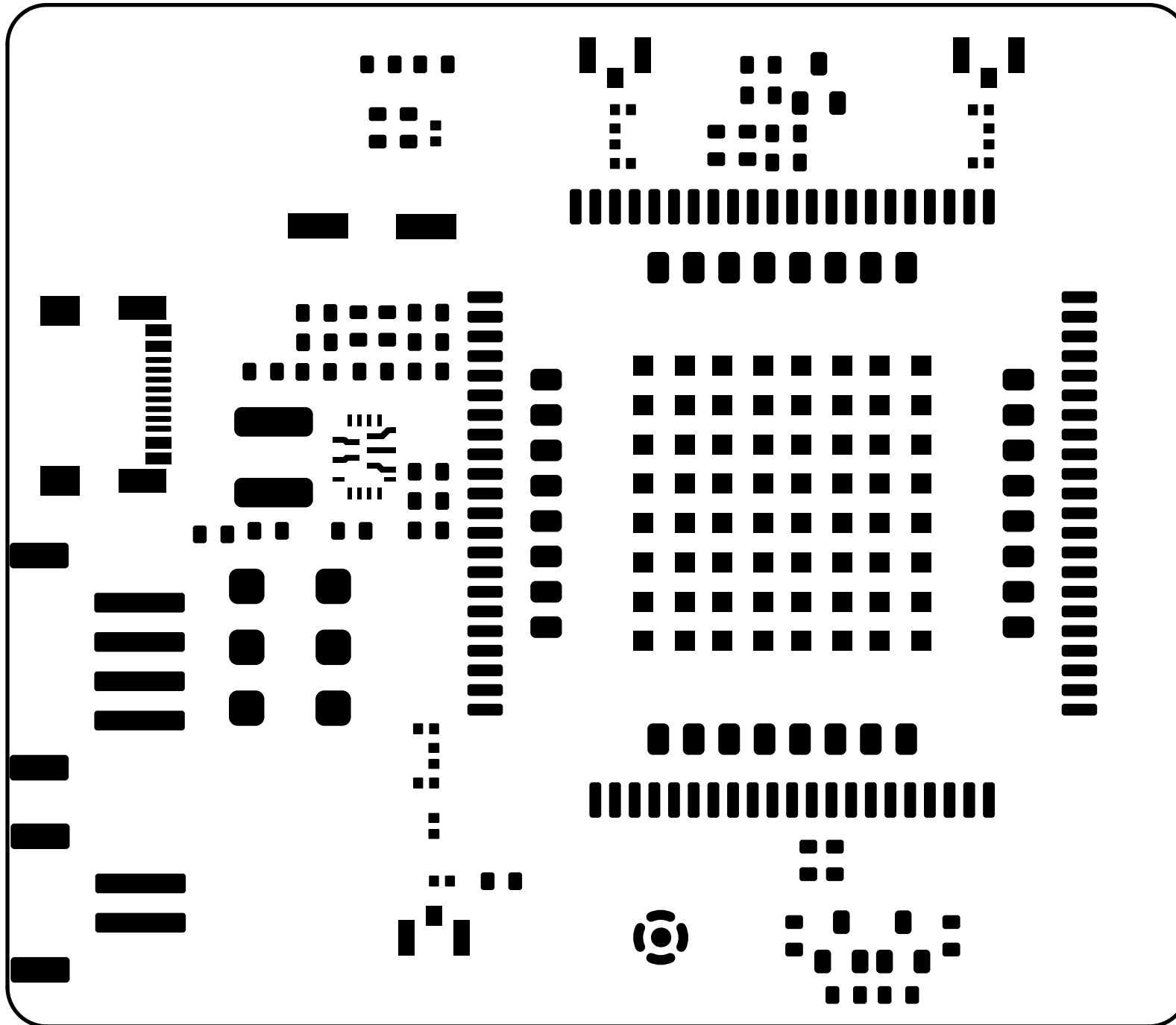
PCB Information	Name:[TEL0161 CAT1][V1.0.0]	Thickness: 1.6mm
Engineer: YXD	Top SolderMask: Black	Bottom SolderMask: Black
Date: 20231031	Top Silkscreen: White	Bottom Silkscreen: White



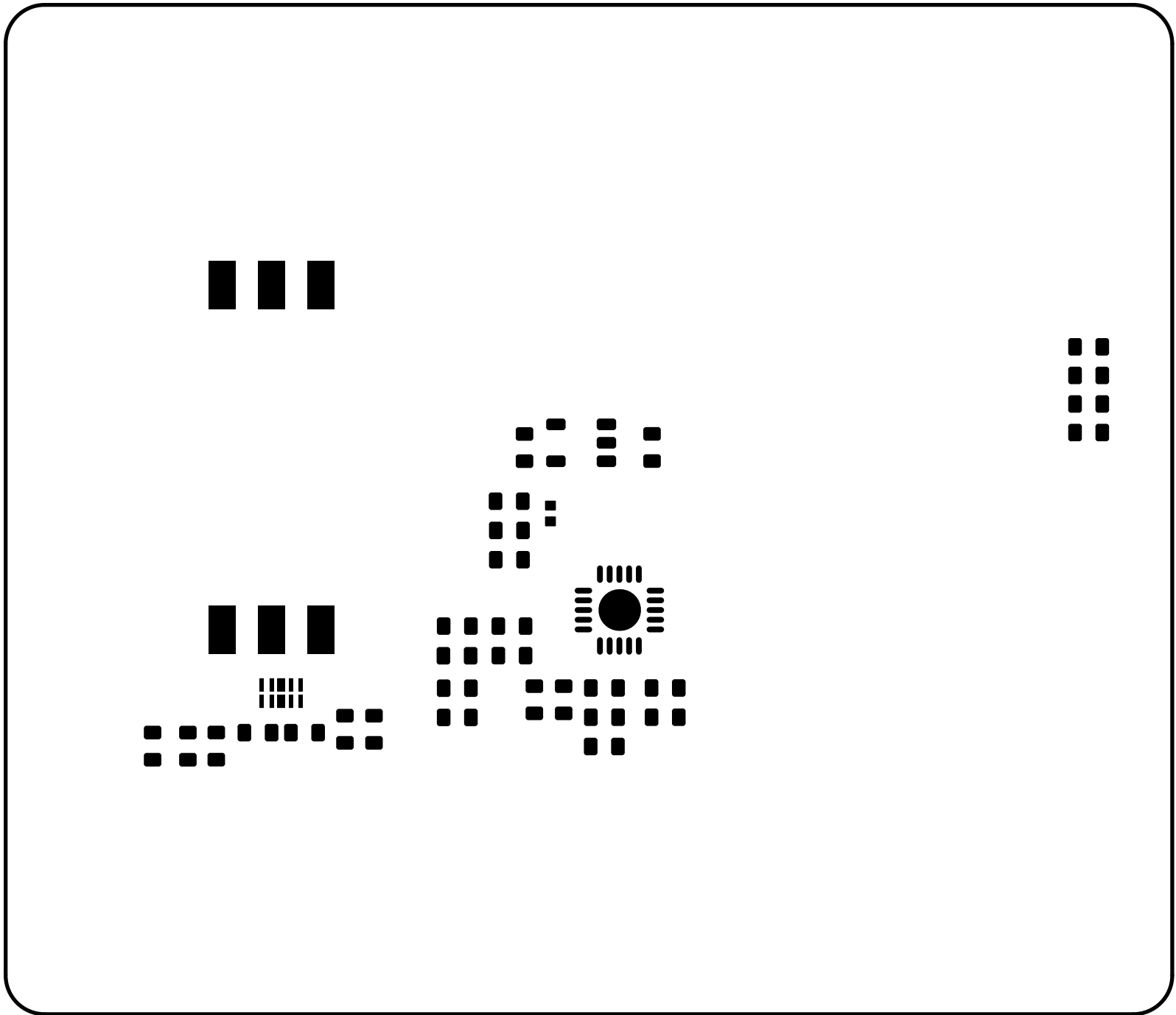
PCB Information	Name:[TEL0161 CAT1][V1.0.0]	Thickness: 1.6mm
Engineer: YXD	Top SolderMask: Black	Bottom SolderMask: Black
Date: 20231031	Top Silkscreen: White	Bottom Silkscreen: White



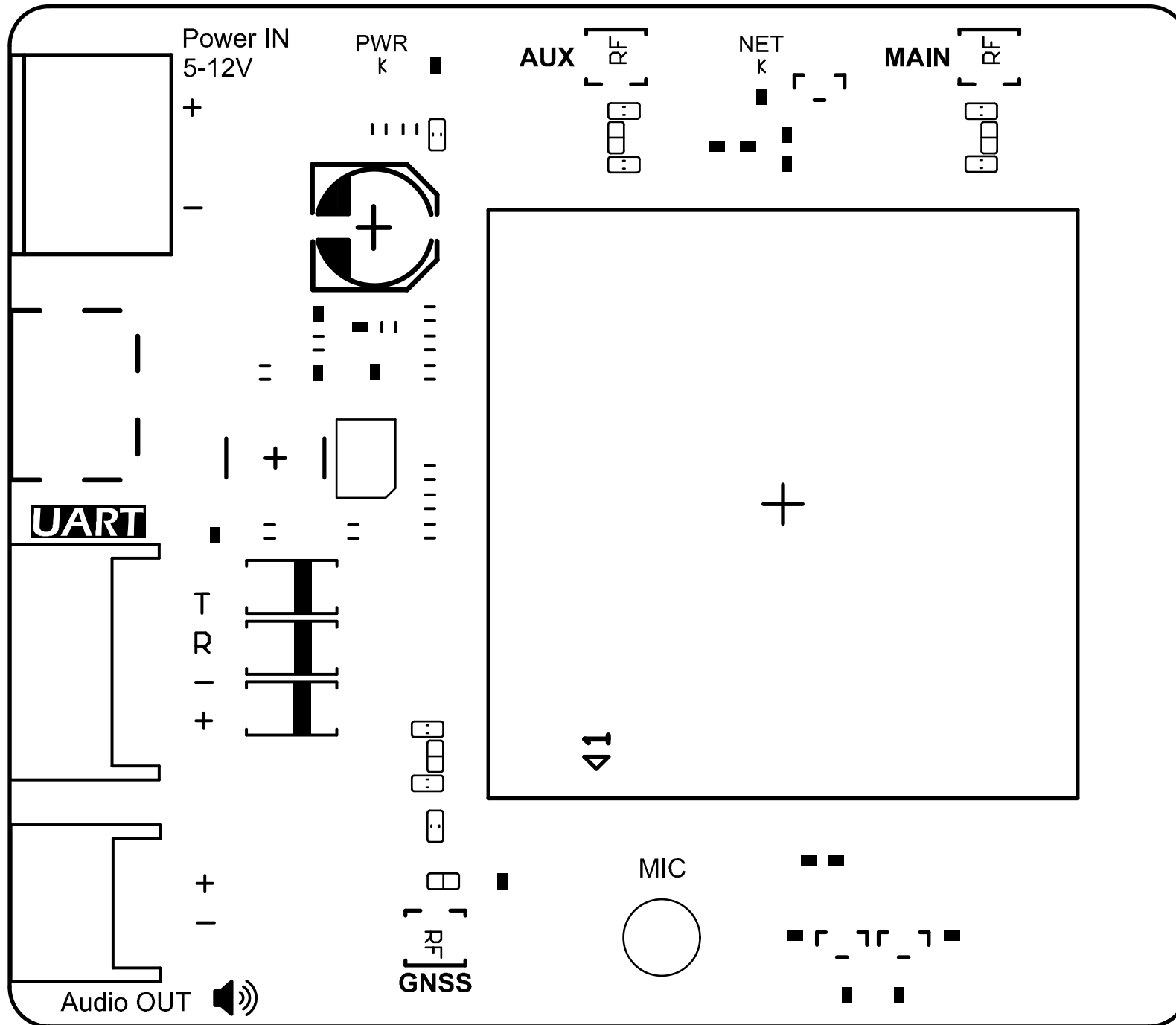
PCB Information	Name:[TEL0161 CAT1][V1.0.0]	Thickness: 1.6mm
Engineer: YXD	Top SolderMask: Black	Bottom SolderMask: Black
Date: 20231031	Top Silkscreen: White	Bottom Silkscreen: White



PCB Information	Name:[TEL0161 CAT1][V1.0.0]	Thickness: 1.6mm
Engineer: YXD	Top SolderMask: Black	Bottom SolderMask: Black
Date: 20231031	Top Silkscreen: White	Bottom Silkscreen: White

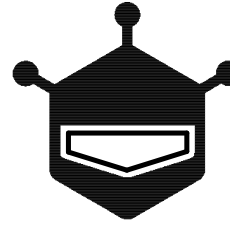


PCB Information	Name:[TEL0161 CAT1][V1.0.0]	Thickness: 1.6mm
Engineer: YXD	Top SolderMask: Black	Bottom SolderMask: Black
Date: 20231031	Top Silkscreen: White	Bottom Silkscreen: White

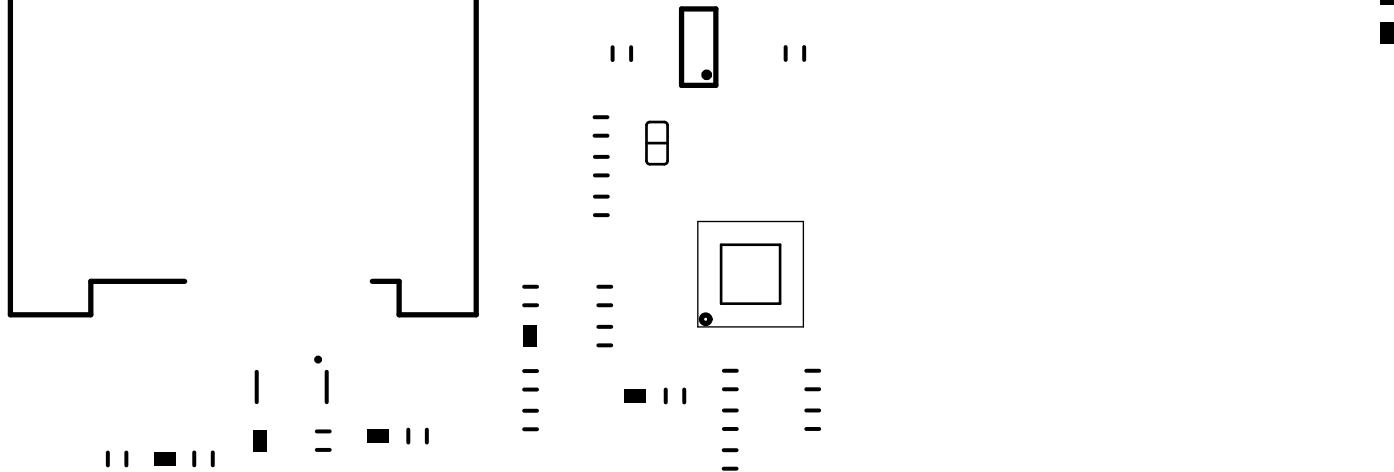


PCB Information		Name:[TEL0161 CAT1][V1.0.0]	Thickness: 1.6mm
Engineer: YXD	Top SolderMask: Black	Bottom SolderMask: Black	
Date: 20231031	Top Silkscreen: White	Bottom Silkscreen: White	

SIM CARD

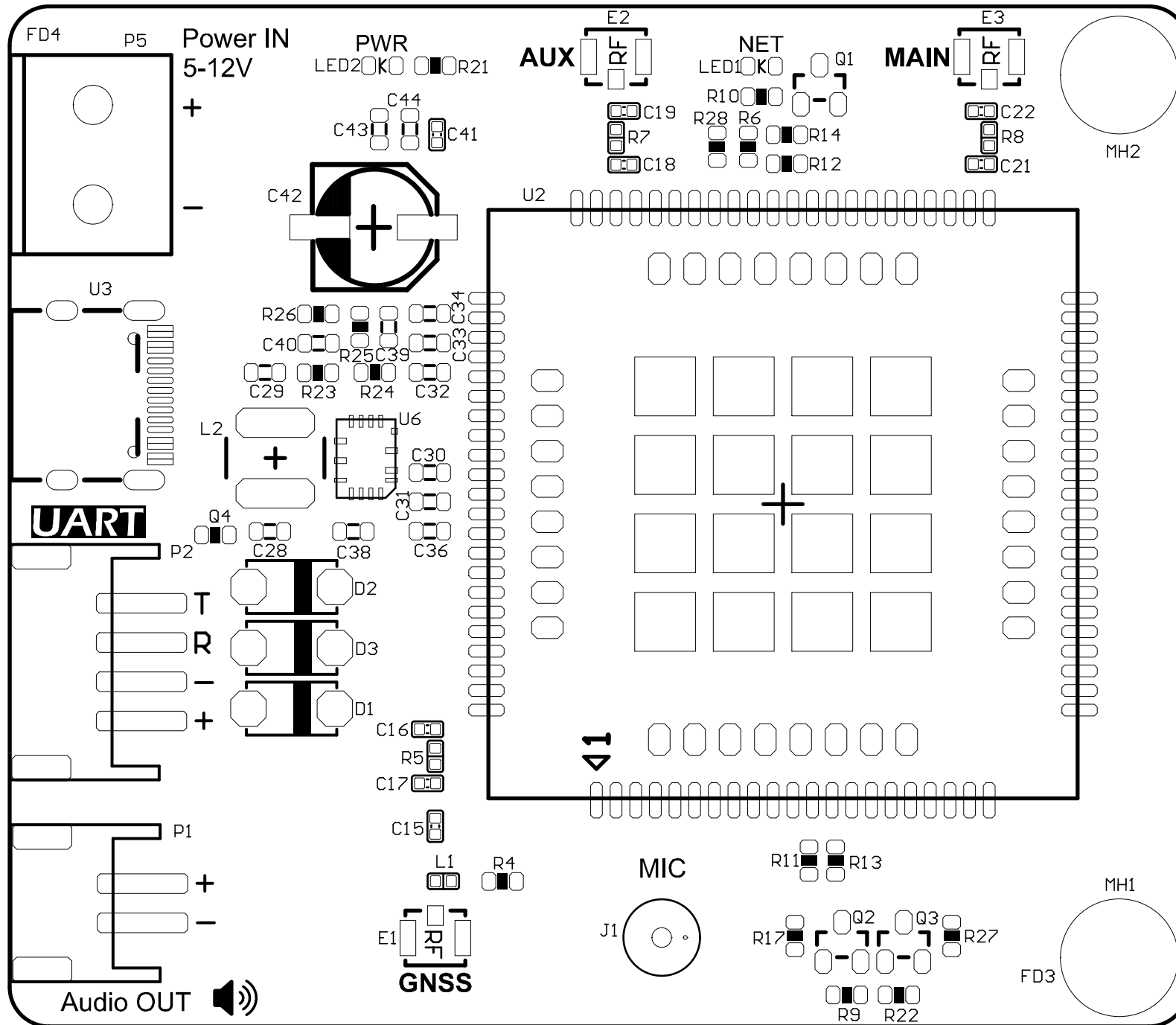


DFROBOT

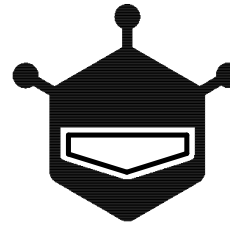


SIM7600G CAT1 4G Communication Module V1.0

PCB Information	Name:[TEL0161 CAT1][V1.0.0]	Thickness: 1.6mm
Engineer: YXD	Top SolderMask: Black	Bottom SolderMask: Black
Date: 20231031	Top Silkscreen: White	Bottom Silkscreen: White



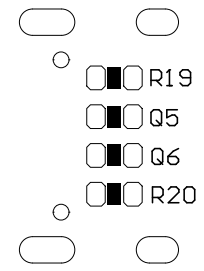
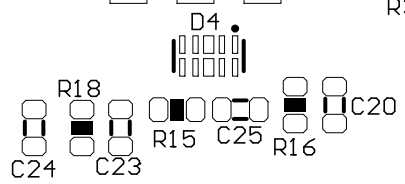
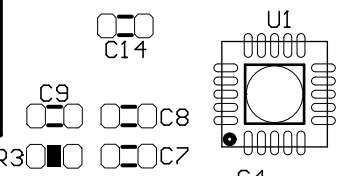
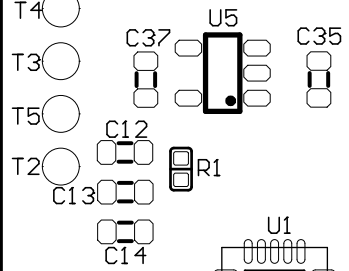
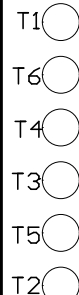
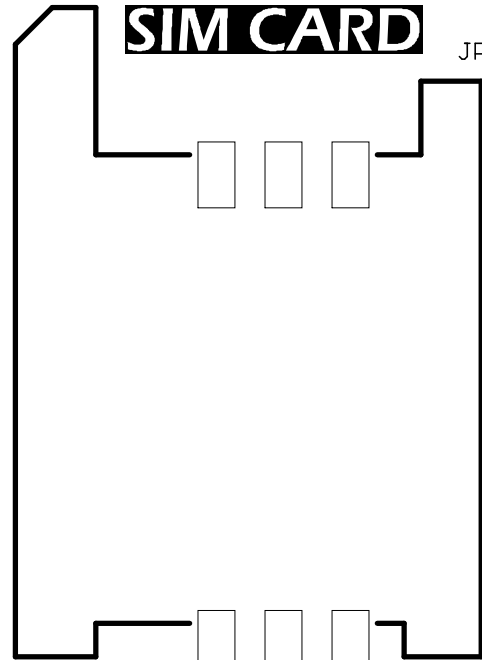
PCB Information		Name:[TEL0161 CAT1][V1.0.0]	Thickness: 1.6mm
Engineer: YXD	Top SolderMask: Black	Bottom SolderMask: Black	
Date: 20231031	Top Silkscreen: White	Bottom Silkscreen: White	



DFROBOT

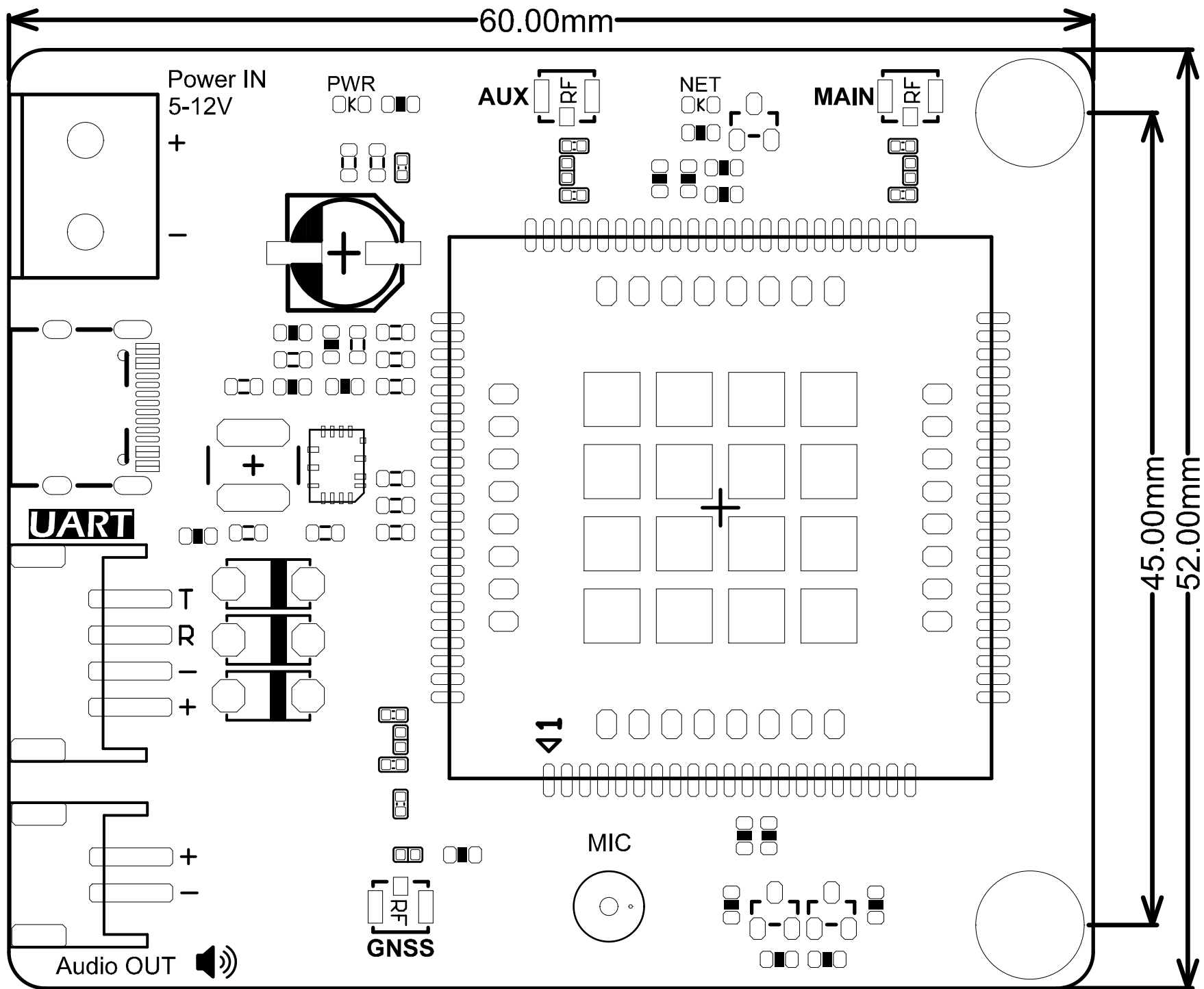
SIM CARD

JP1

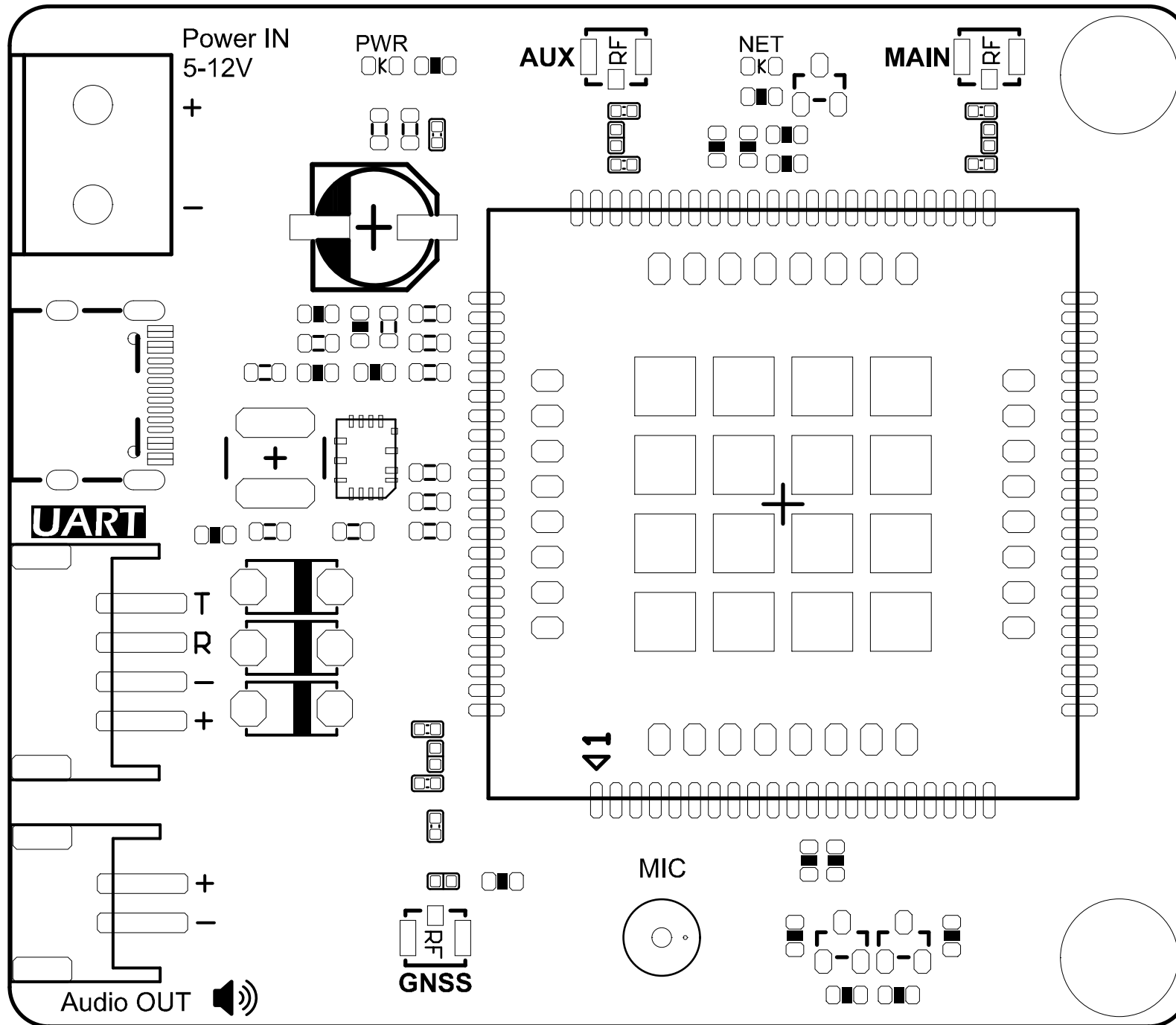


SIM7600G CAT1 4G Communication Module V1.0

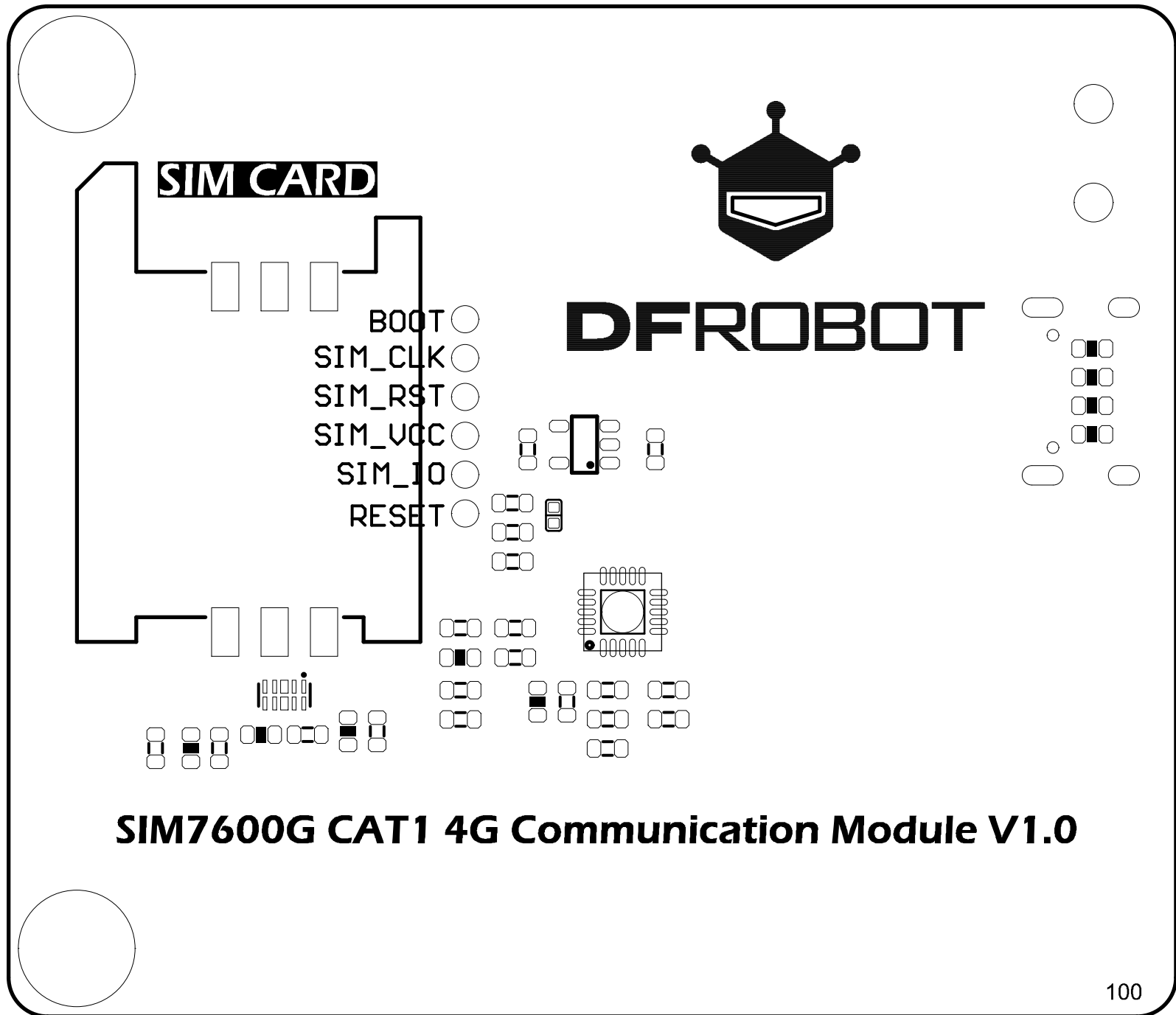
PCB Information	Name:[TEL0161 CAT1][V1.0.0]	Thickness: 1.6mm
Engineer: YXD	Top SolderMask: Black	Bottom SolderMask: Black
Date: 20231031	Top Silkscreen: White	Bottom Silkscreen: White



PCB Information		Name:[TEL0161 CAT1][V1.0.0]	Thickness: 1.6mm
Engineer: YXD	Top SolderMask: Black	Bottom SolderMask: Black	
Date: 20231031	Top Silkscreen: White	Bottom Silkscreen: White	



PCB Information		Name:[TEL0161 CAT1][V1.0.0]	Thickness: 1.6mm
Engineer: YXD	Top SolderMask: Black	Bottom SolderMask: Black	
Date: 20231031	Top Silkscreen: White	Bottom Silkscreen: White	



SIM7600G CAT1 4G Communication Module V1.0

PCB Information	Name:[TEL0161 CAT1][V1.0.0]	Thickness: 1.6mm
Engineer: YXD	Top SolderMask: Black	Bottom SolderMask: Black
Date: 20231031	Top Silkscreen: White	Bottom Silkscreen: White