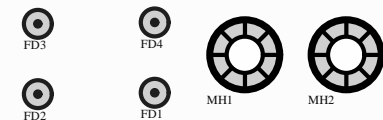
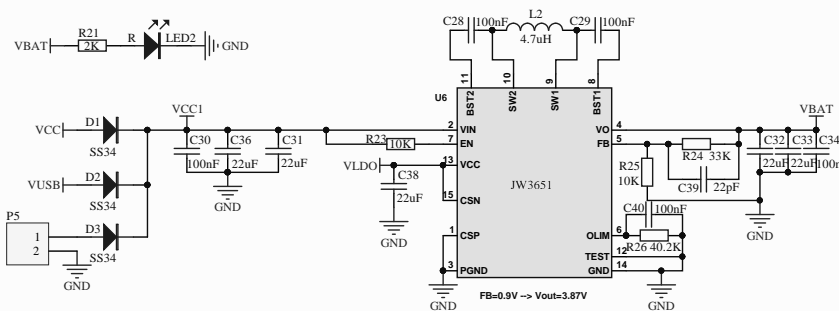
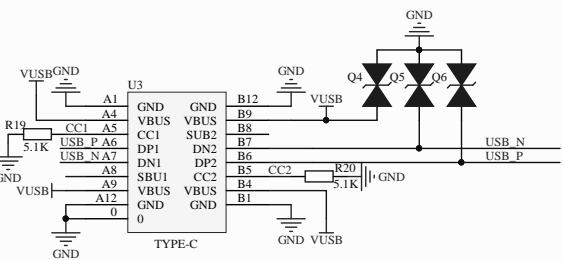
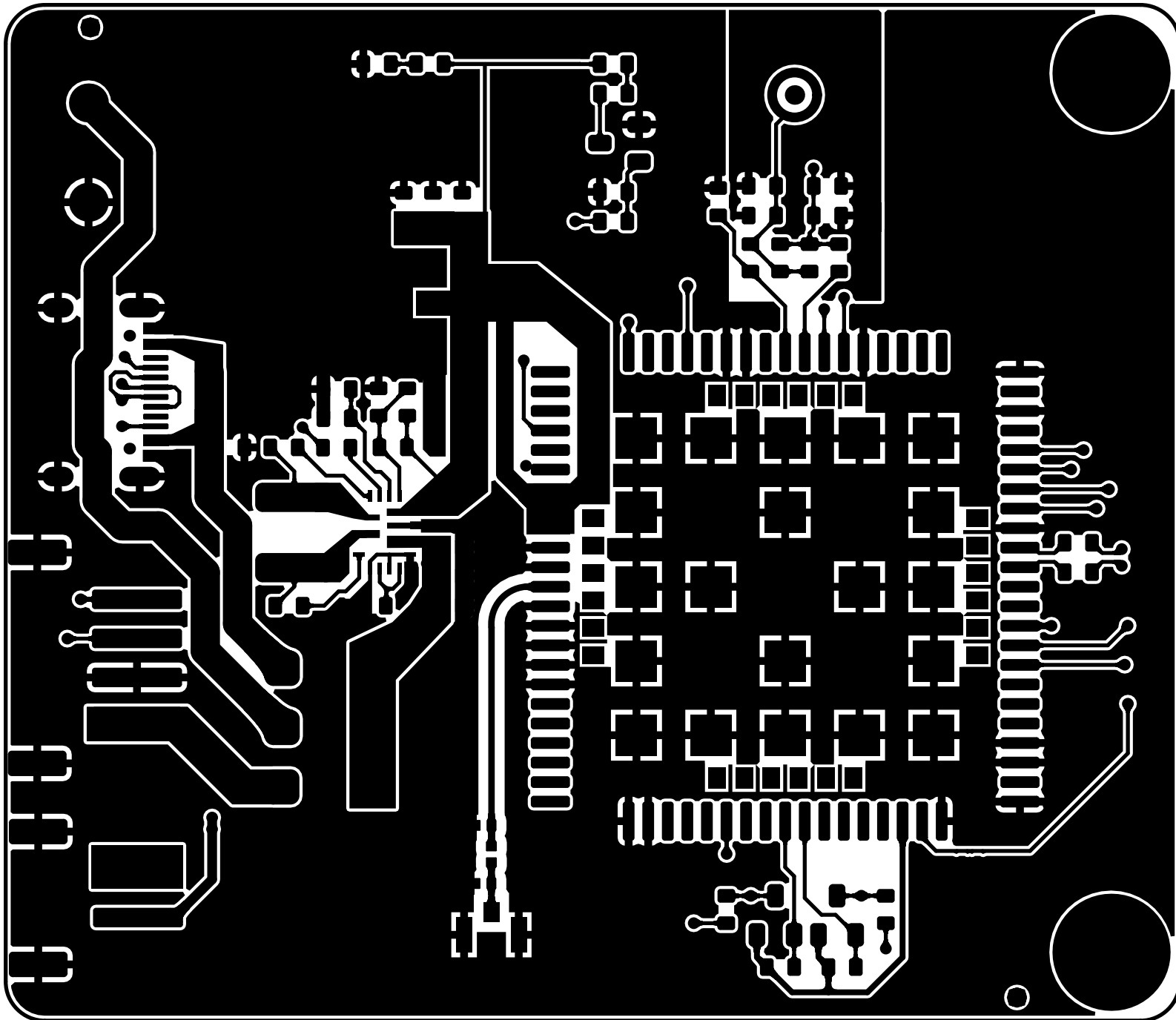
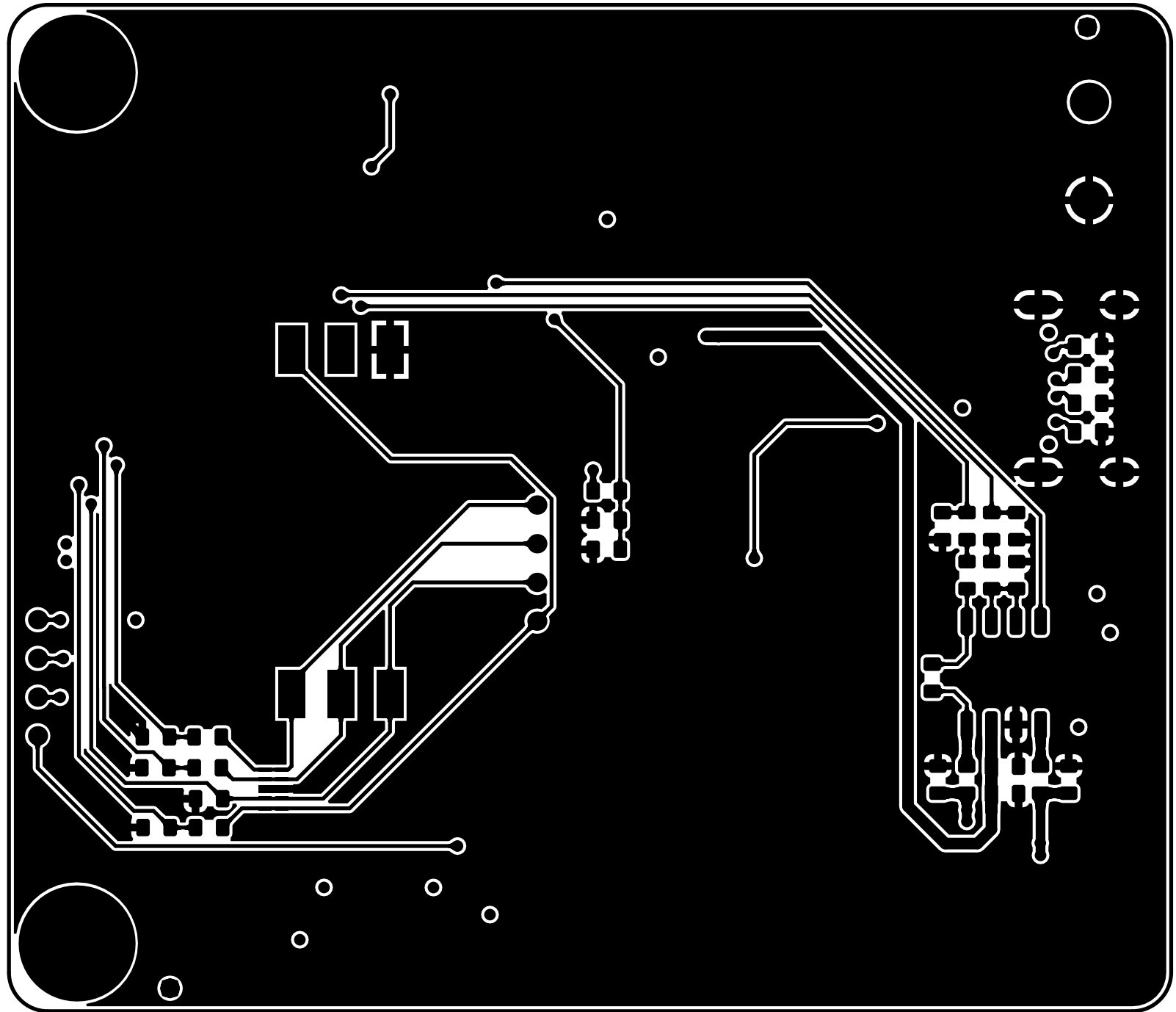


A7670G

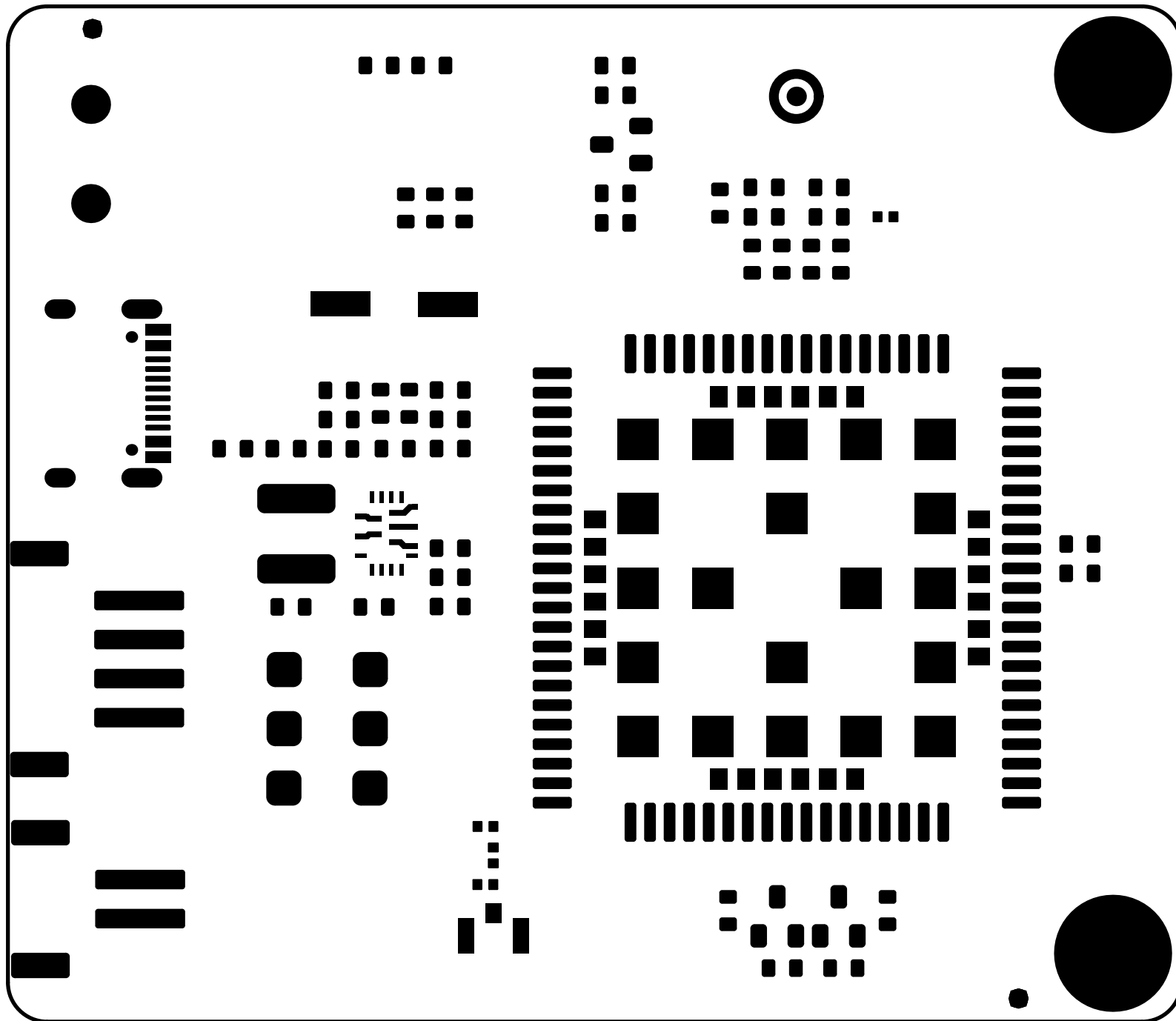




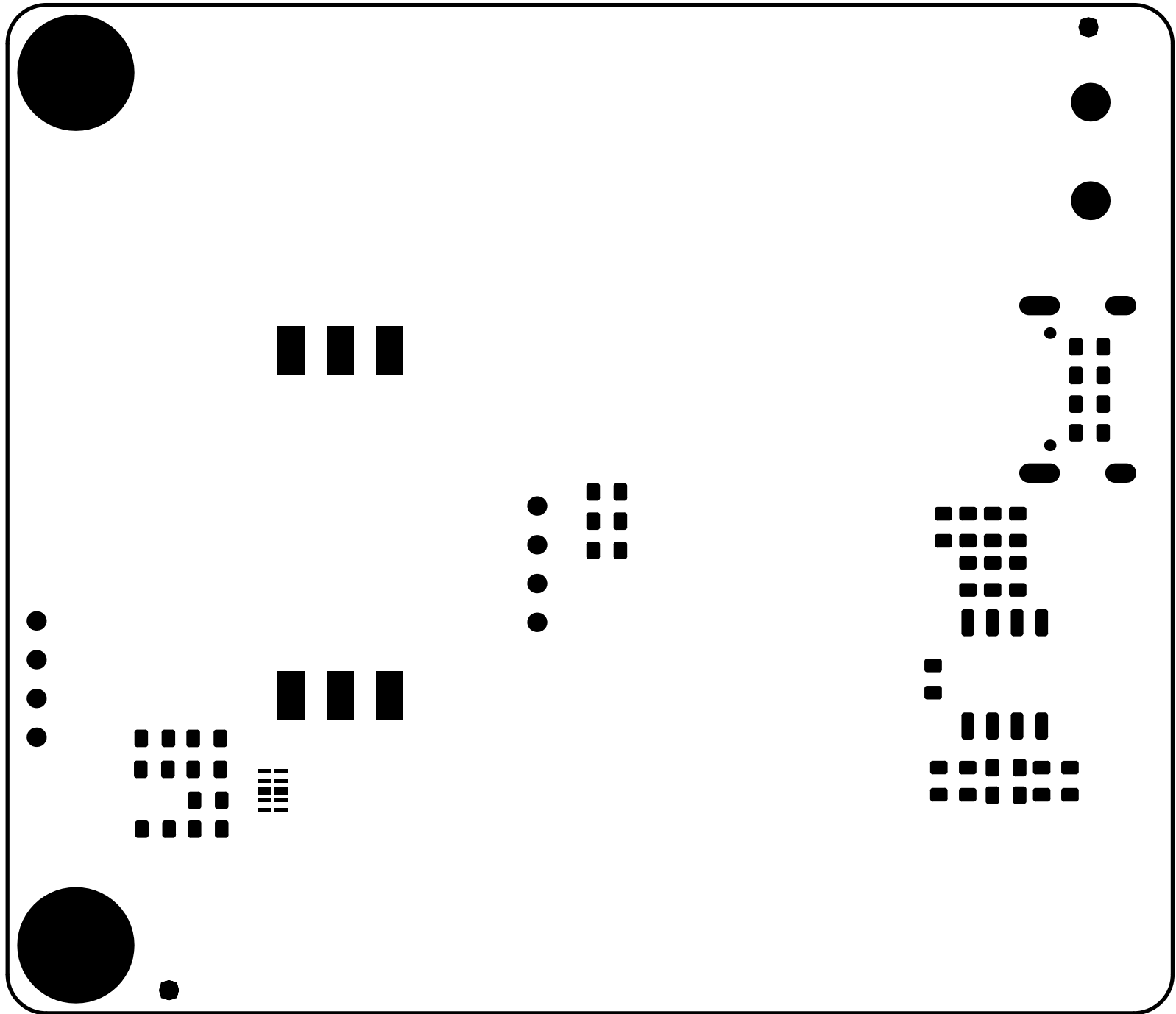
PCB Information	Name:[TEL0163 CAT1][V1.0.0]	Thickness: 1.6mm
Engineer: YXD	Top SolderMask: Black	Bottom SolderMask: Black
Date: 20231031	Top Silkscreen: White	Bottom Silkscreen: White



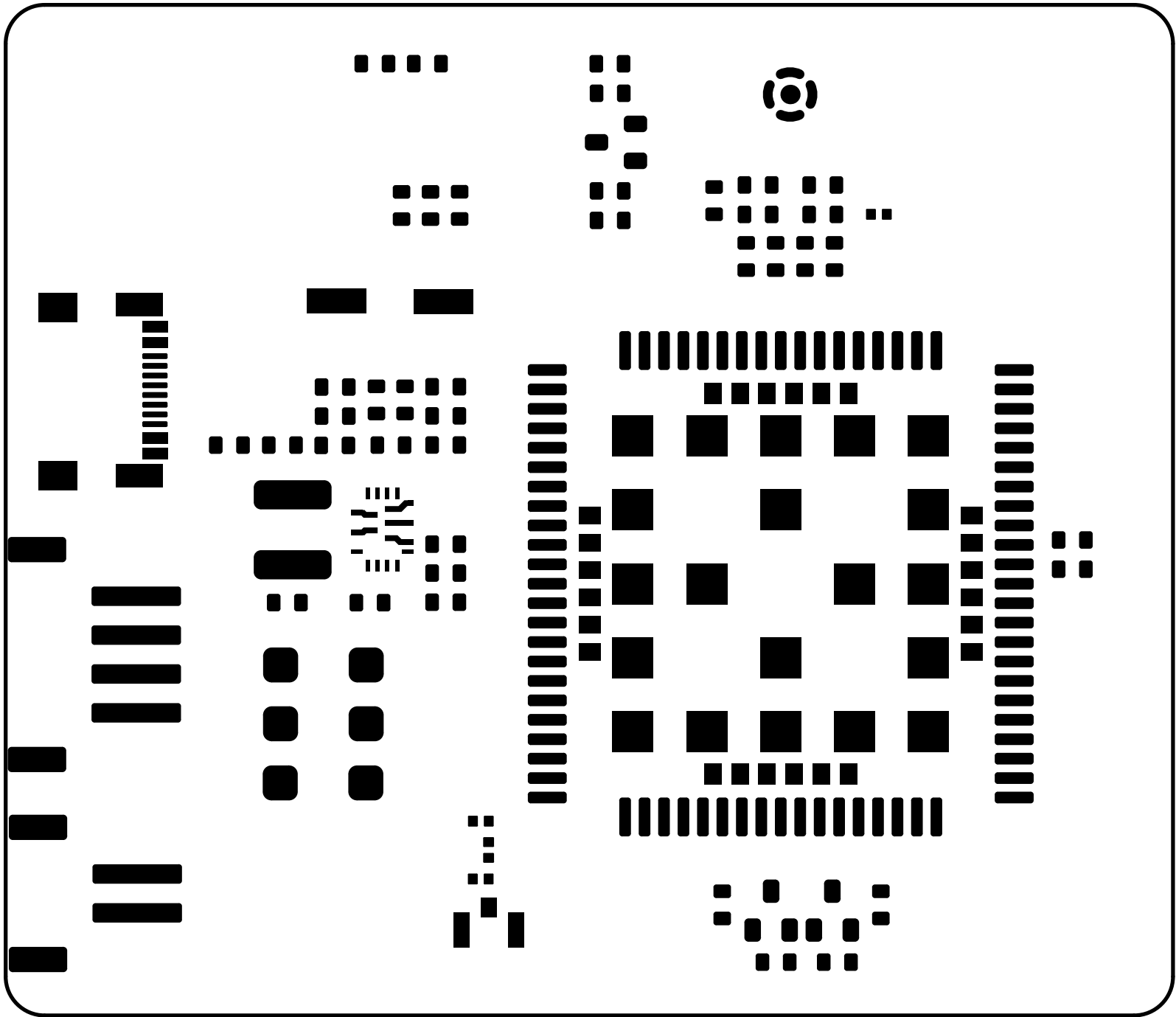
PCB Information	Name:[TEL0163 CAT1][V1.0.0]	Thickness: 1.6mm
Engineer: YXD	Top SolderMask: Black	Bottom SolderMask: Black
Date: 20231031	Top Silkscreen: White	Bottom Silkscreen: White



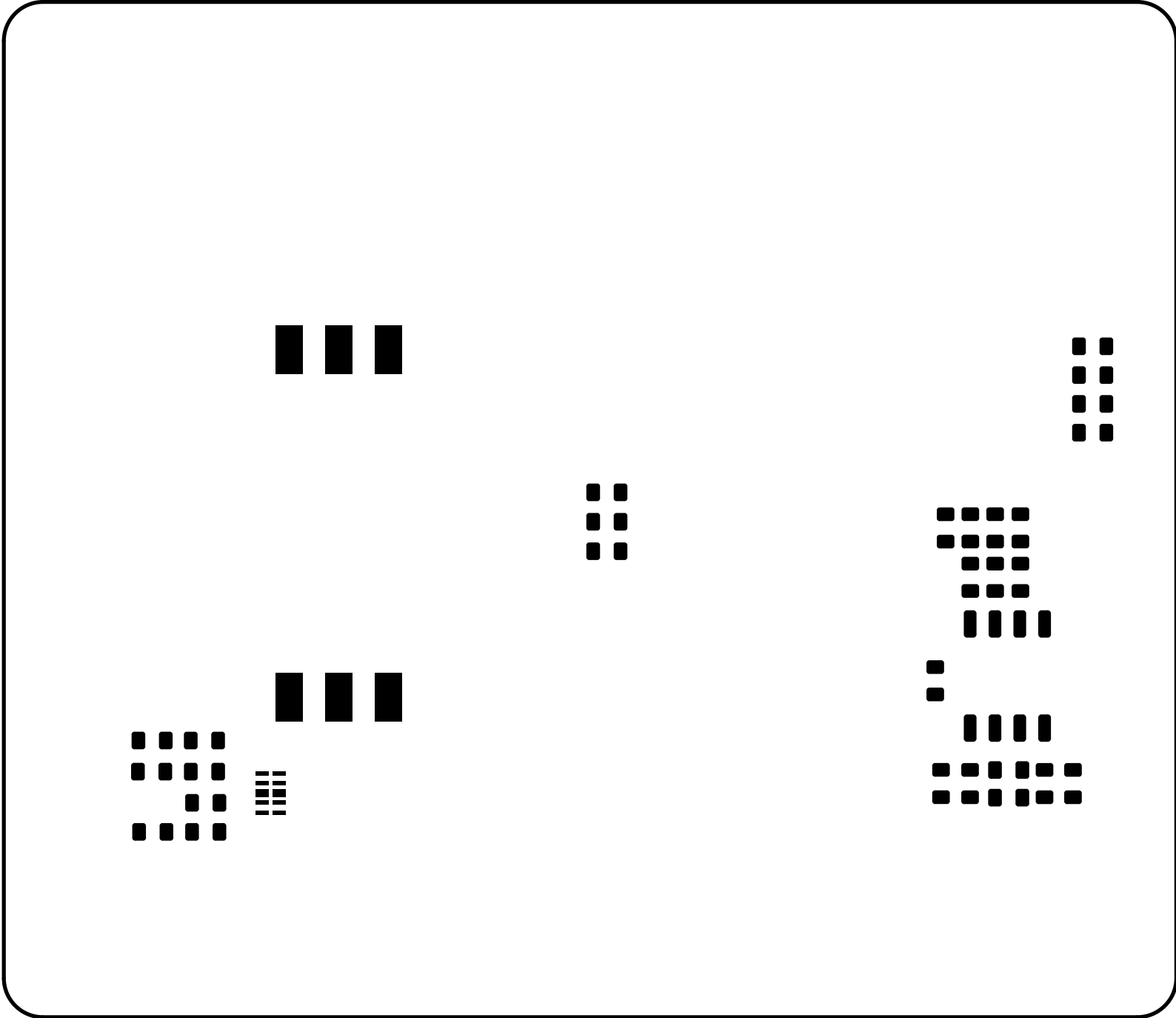
PCB Information	Name:[TEL0163 CAT1][V1.0.0]	Thickness: 1.6mm
Engineer: YXD	Top SolderMask: Black	Bottom SolderMask: Black
Date: 20231031	Top Silkscreen: White	Bottom Silkscreen: White



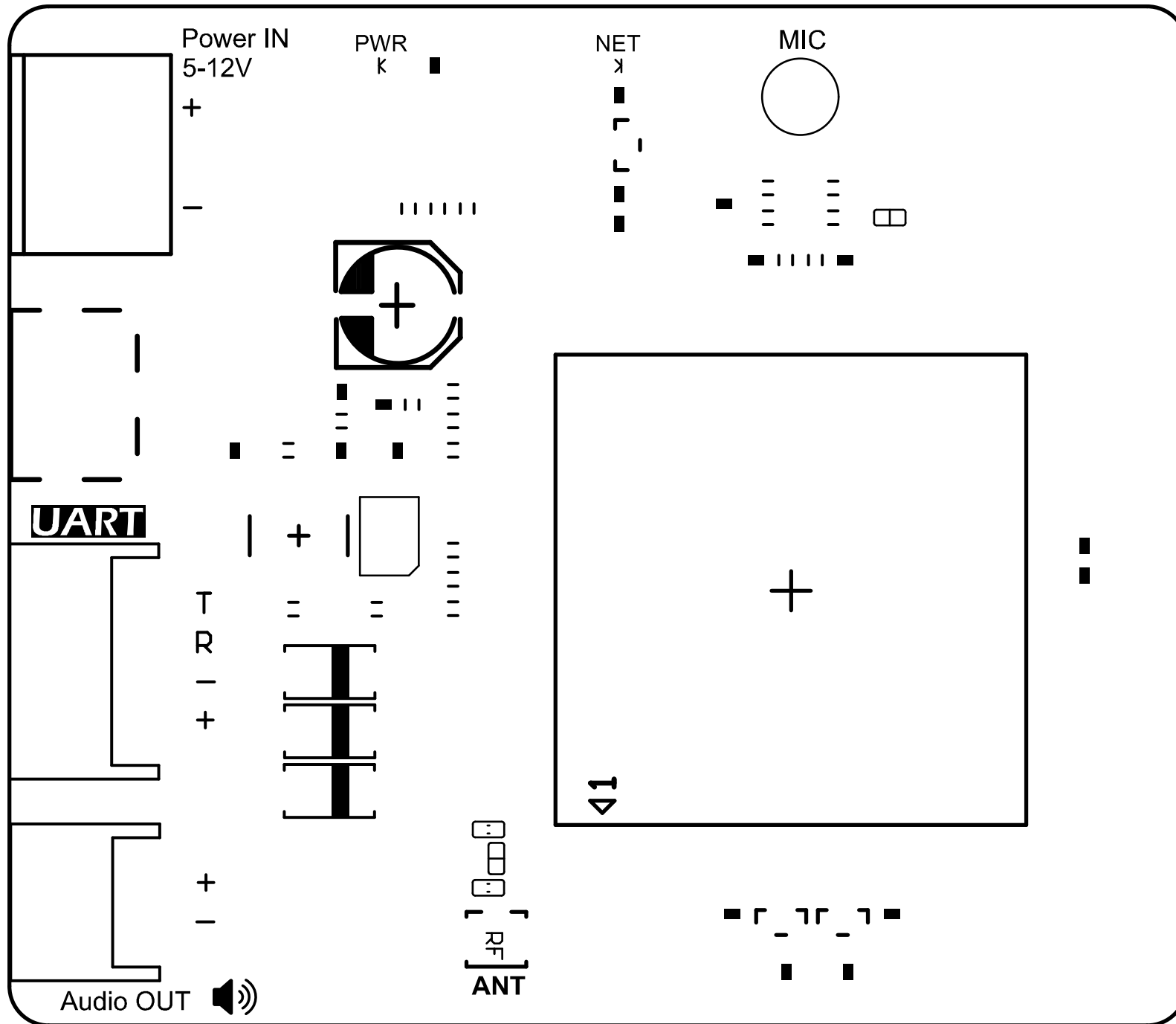
PCB Information	Name:[TEL0163 CAT1][V1.0.0]	Thickness: 1.6mm
Engineer: YXD	Top SolderMask: Black	Bottom SolderMask: Black
Date: 20231031	Top Silkscreen: White	Bottom Silkscreen: White



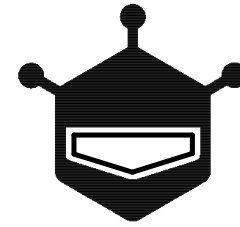
PCB Information	Name:[TEL0163 CAT1][V1.0.0]	Thickness: 1.6mm
Engineer: YXD	Top SolderMask: Black	Bottom SolderMask: Black
Date: 20231031	Top Silkscreen: White	Bottom Silkscreen: White



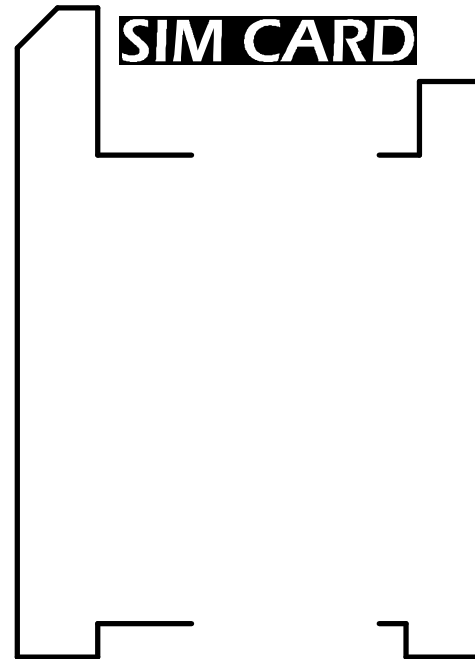
PCB Information		
Name:[TEL0163 CAT1][V1.0.0]	Thickness: 1.6mm	
Engineer: YXD	Top SolderMask: Black	Bottom SolderMask: Black
Date: 20231031	Top Silkscreen: White	Bottom Silkscreen: White



PCB Information		Name:[TEL0163 CAT1][V1.0.0]	Thickness: 1.6mm
Engineer: YXD	Top SolderMask: Black	Bottom SolderMask: Black	
Date: 20231031	Top Silkscreen: White	Bottom Silkscreen: White	

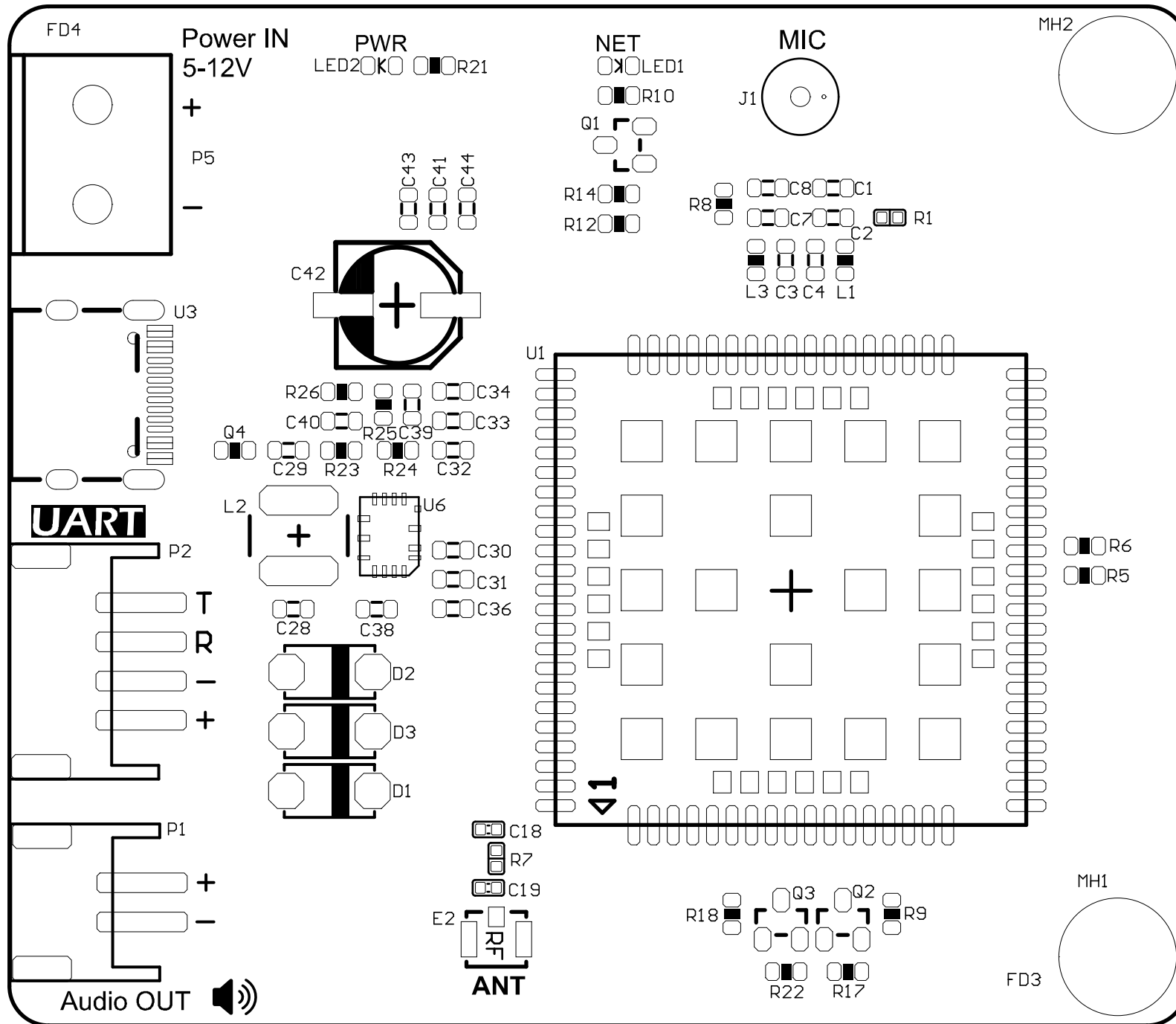


DFROBOT



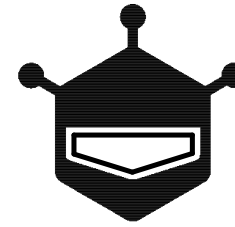
A7670G CAT1 4G Communication Module V1.0

PCB Information	Name:[TEL0163 CAT1][V1.0.0]	Thickness: 1.6mm
Engineer: YXD	Top SolderMask: Black	Bottom SolderMask: Black
Date: 20231031	Top Silkscreen: White	Bottom Silkscreen: White

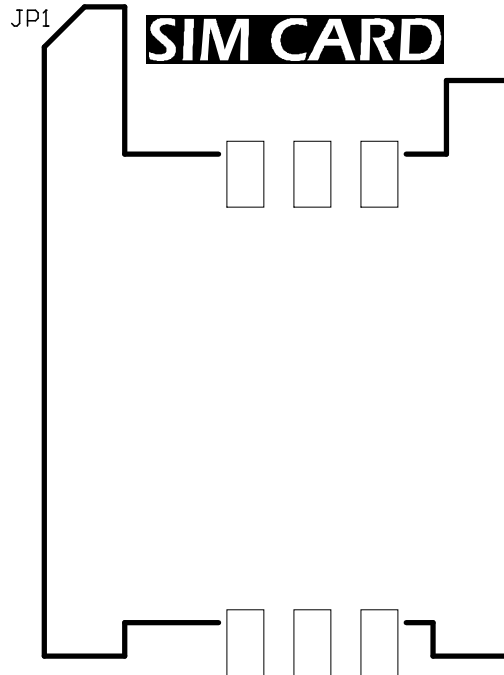


PCB Information		Name:[TEL0163 CAT1][V1.0.0]	Thickness: 1.6mm
Engineer: YXD	Top SolderMask: Black	Bottom SolderMask: Black	
Date: 20231031	Top Silkscreen: White	Bottom Silkscreen: White	

FD1



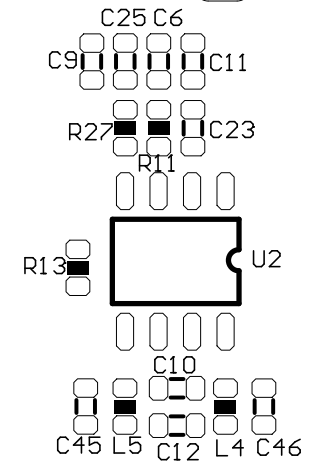
DFROBOT



- T5
- T3
- T1
- T8

- C21 □ □ □ □ R4
- C20 □ □ □ □ R3
- C22 □ □ □ □ D4
- C17 □ □ □ □ R2

- T7 □ □ R15
- T6 □ □ R16
- T4 □ □ C5
- T2

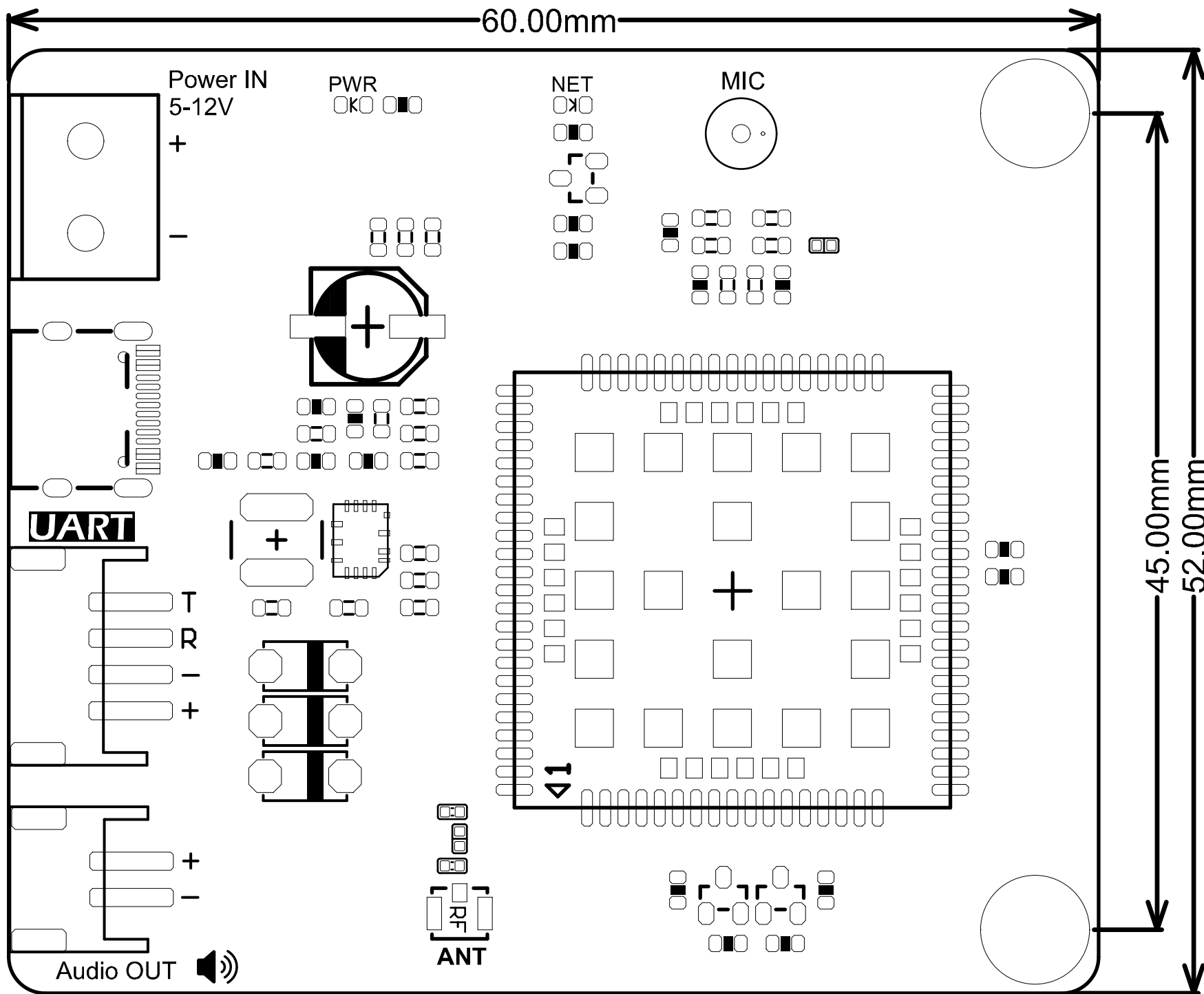


- □ R19
- □ Q6
- □ Q5
- □ R20

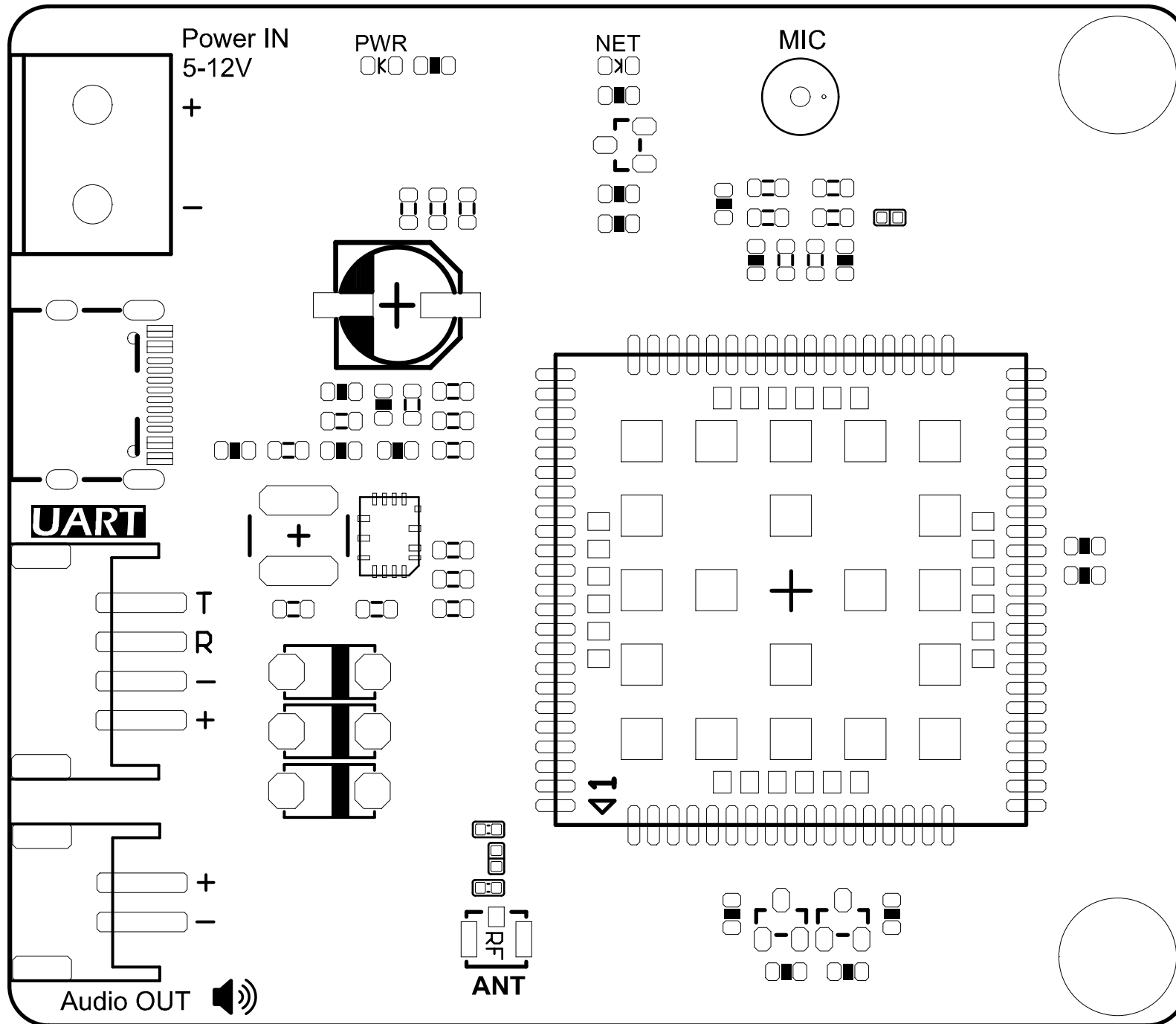
A7670G CAT1 4G Communication Module V1.0

FD2

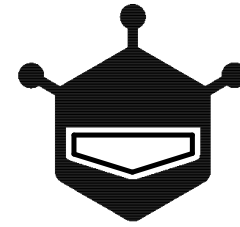
PCB Information	Name:[TEL0163 CAT1][V1.0.0]	Thickness: 1.6mm
Engineer: YXD	Top SolderMask: Black	Bottom SolderMask: Black
Date: 20231031	Top Silkscreen: White	Bottom Silkscreen: White



PCB Information		
Name: [TEL0163 CAT1][V1.0.0]	Thickness: 1.6mm	
Engineer: YXD	Top SolderMask: Black	Bottom SolderMask: Black
Date: 20231031	Top Silkscreen: White	Bottom Silkscreen: White

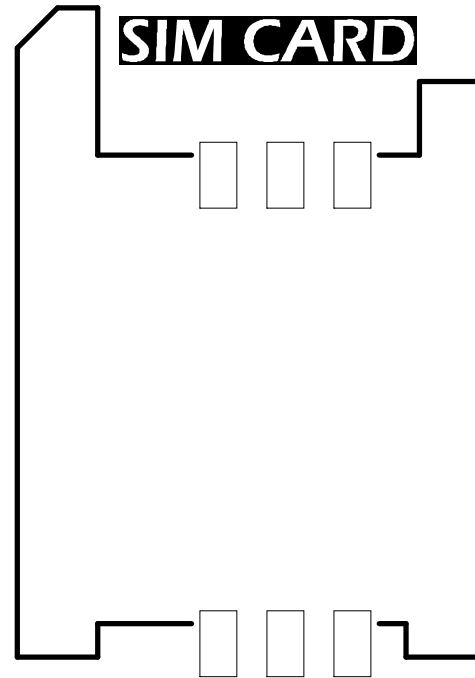


PCB Information		Name:[TEL0163 CAT1][V1.0.0]	Thickness: 1.6mm
Engineer: YXD	Top SolderMask: Black	Bottom SolderMask: Black	
Date: 20231031	Top Silkscreen: White	Bottom Silkscreen: White	



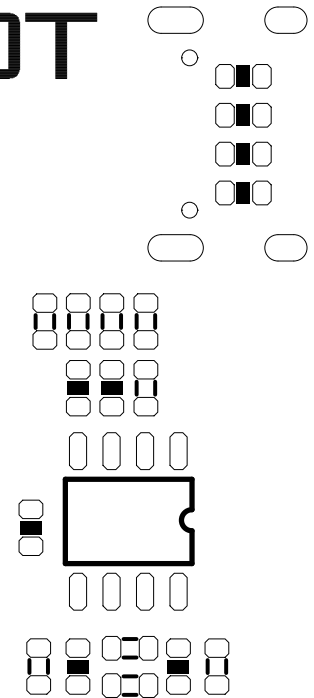
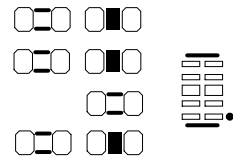
DFROBOT

SIM CARD



- SIM_CLK
- SIM_RST
- SIM_VCC
- SIM_IO

- UART_LOG_TX
- UART_LOG_RX
- RESET
- BOOT



A7670G CAT1 4G Communication Module V1.0

PCB Information	Name:[TEL0163 CAT1][V1.0.0]	Thickness: 1.6mm
Engineer: YXD	Top SolderMask: Black	Bottom SolderMask: Black
Date: 20231031	Top Silkscreen: White	Bottom Silkscreen: White